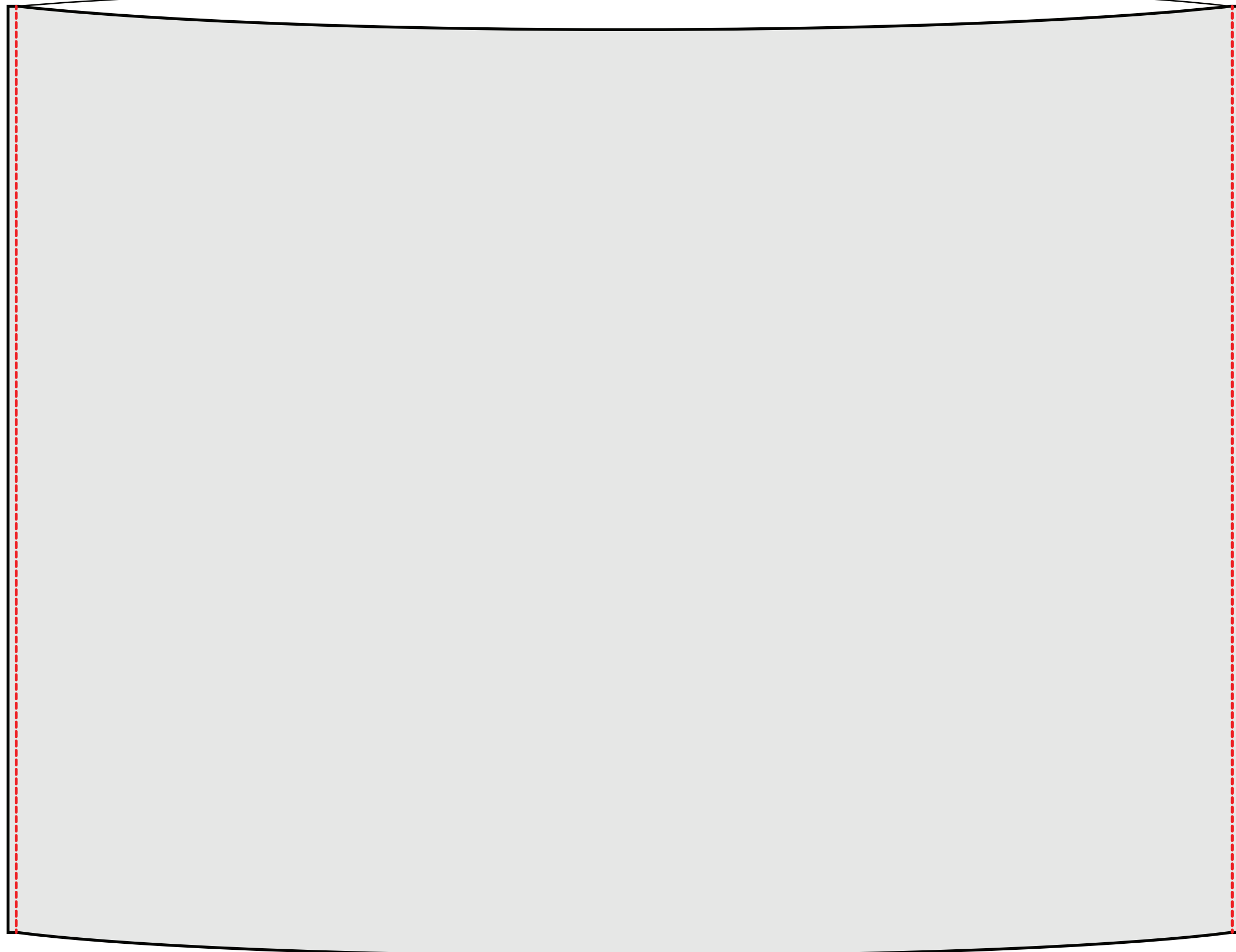


1. sew together pieces at the sides

right sides together

press seams open



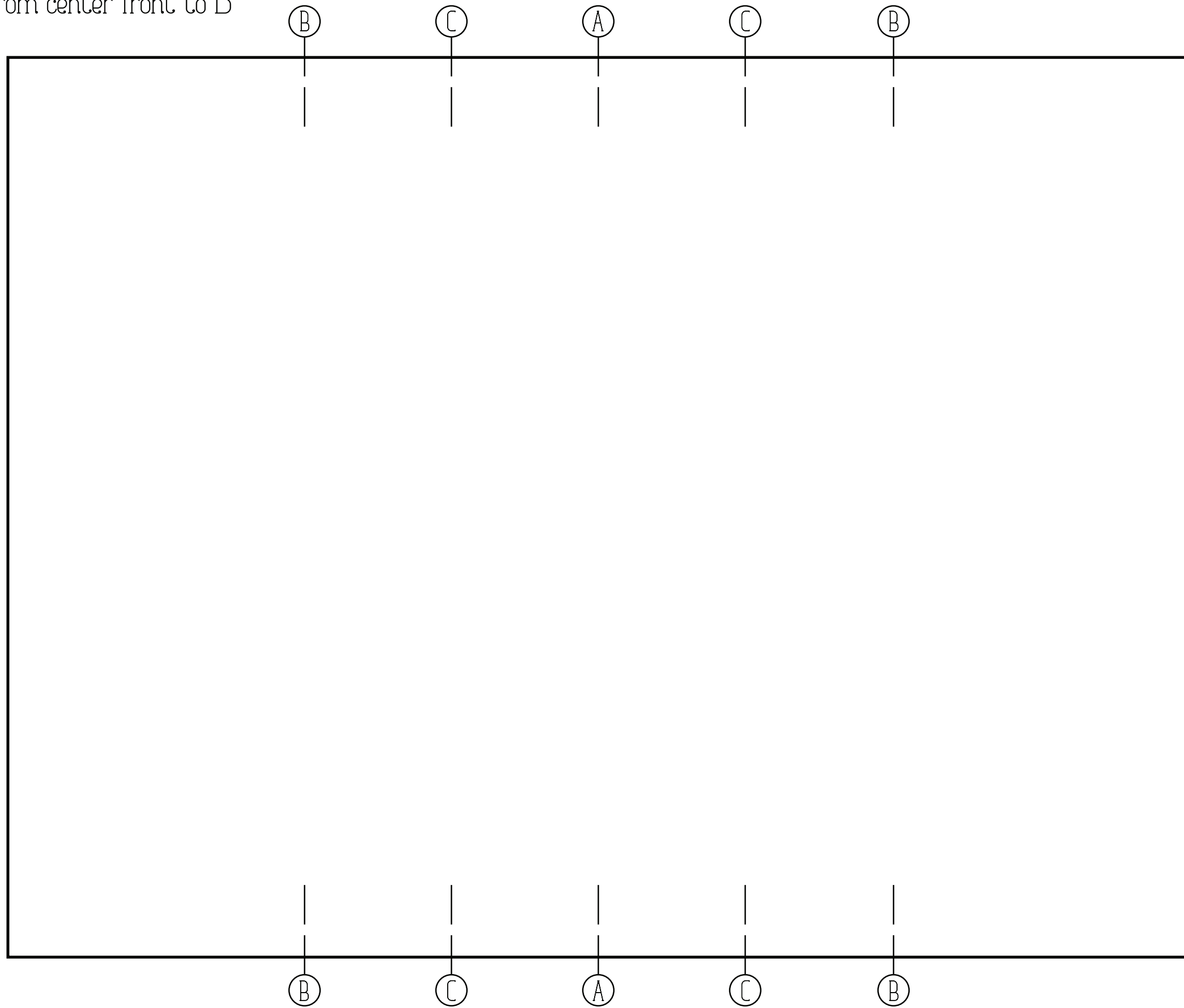
turn right side out...

2. mark front pleats top and bottom

A= center front

B= half way from center front to side seams

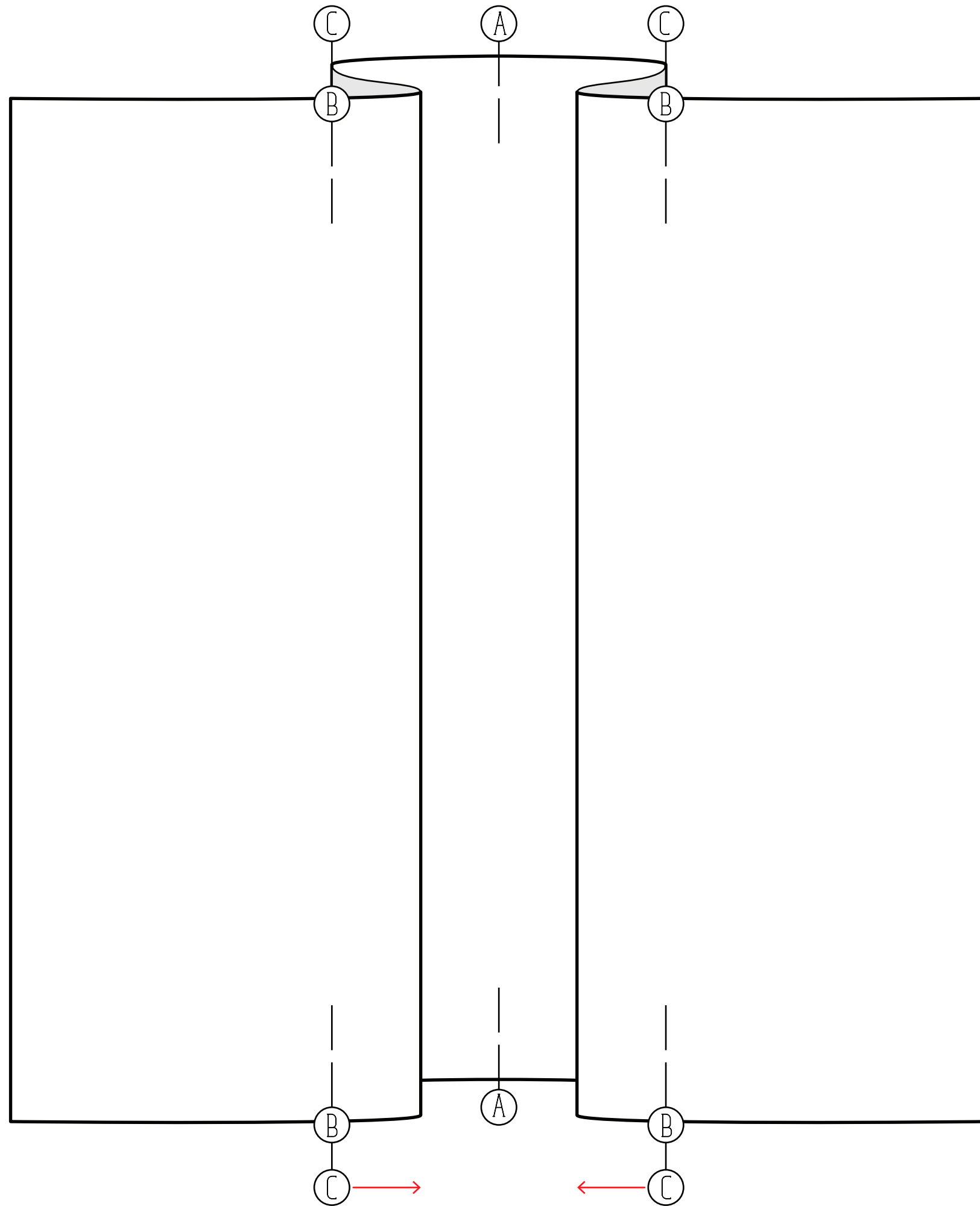
C= half way from center front to B



mark front and back pieces

3. fold front pleats

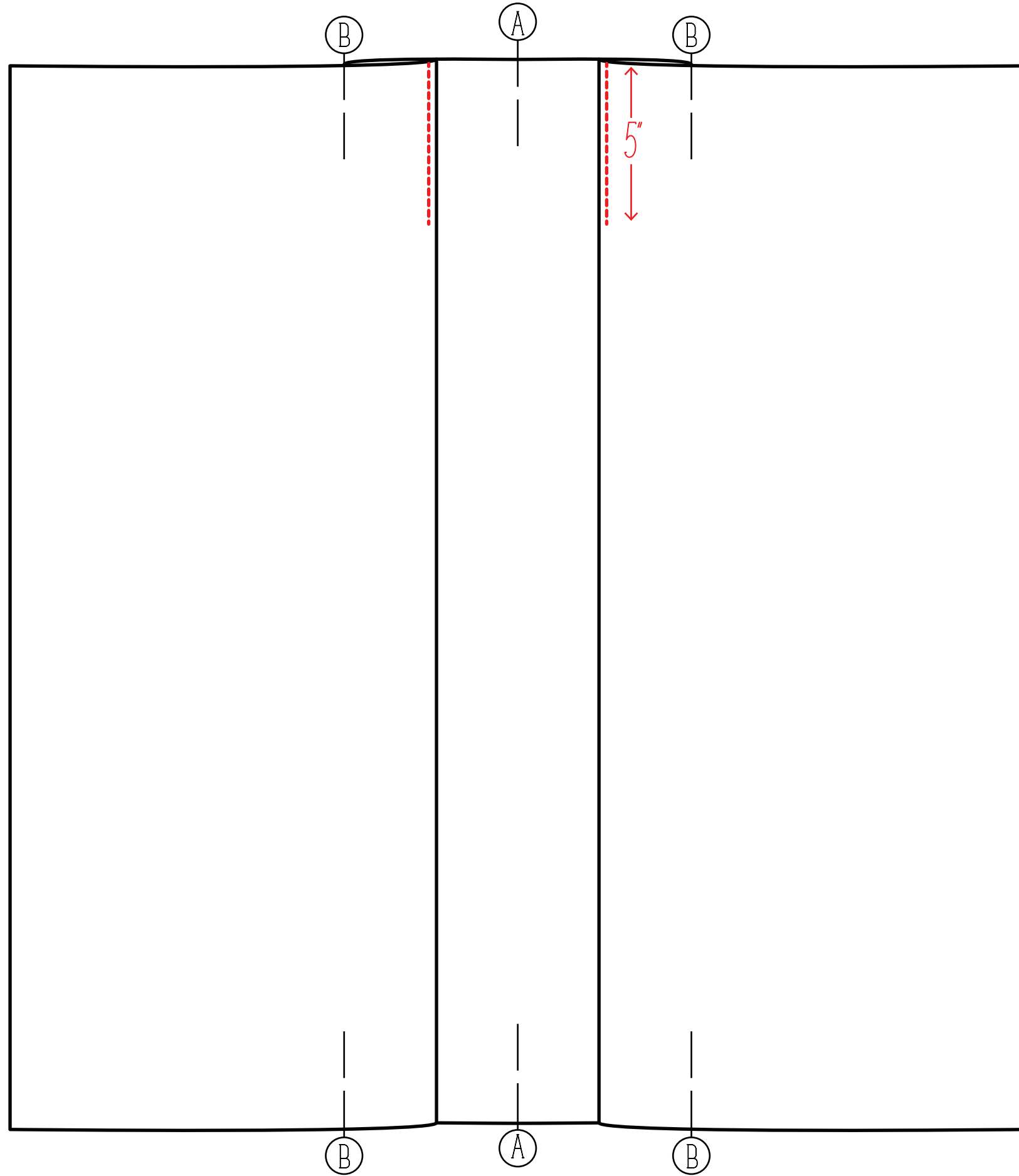
line up points B and C to create a fold on the outside of the fabric



folds should face center front

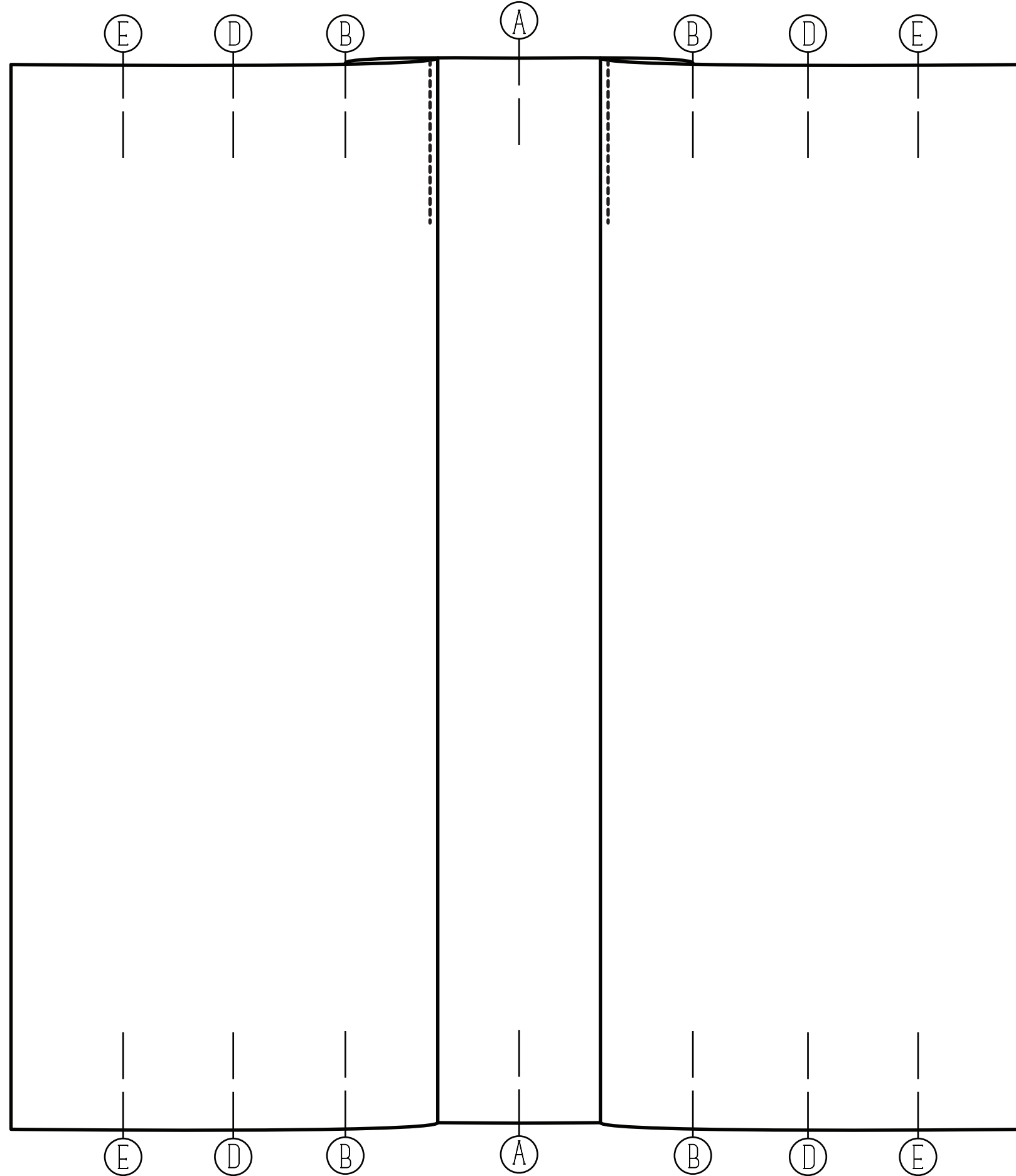
4. top stitch front pleats

top stitch close to the fold lines 5" down from the top edge



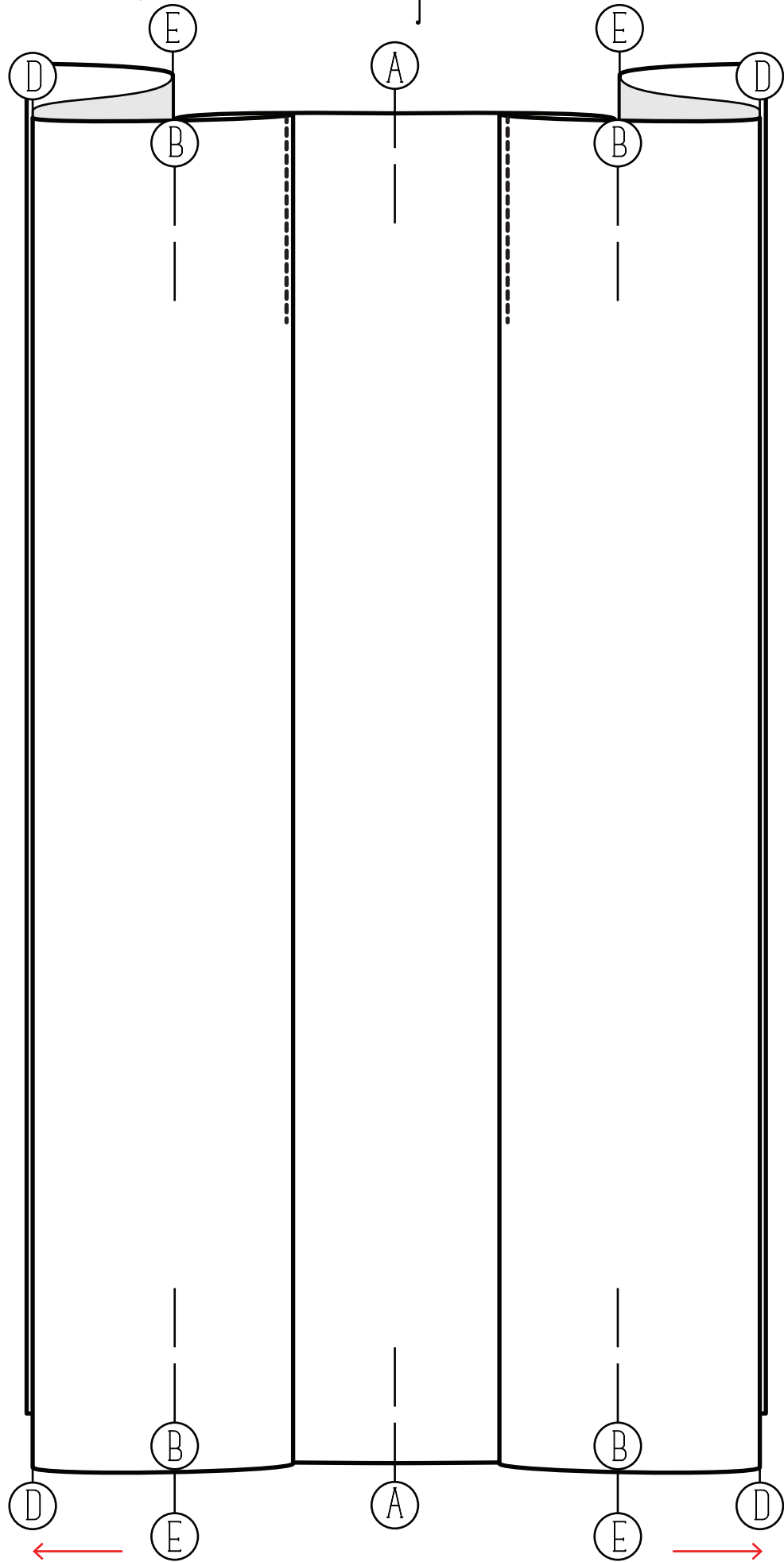
5. mark side pleats

D= third of the way from B to side seam
E= third of the way from side seam to B



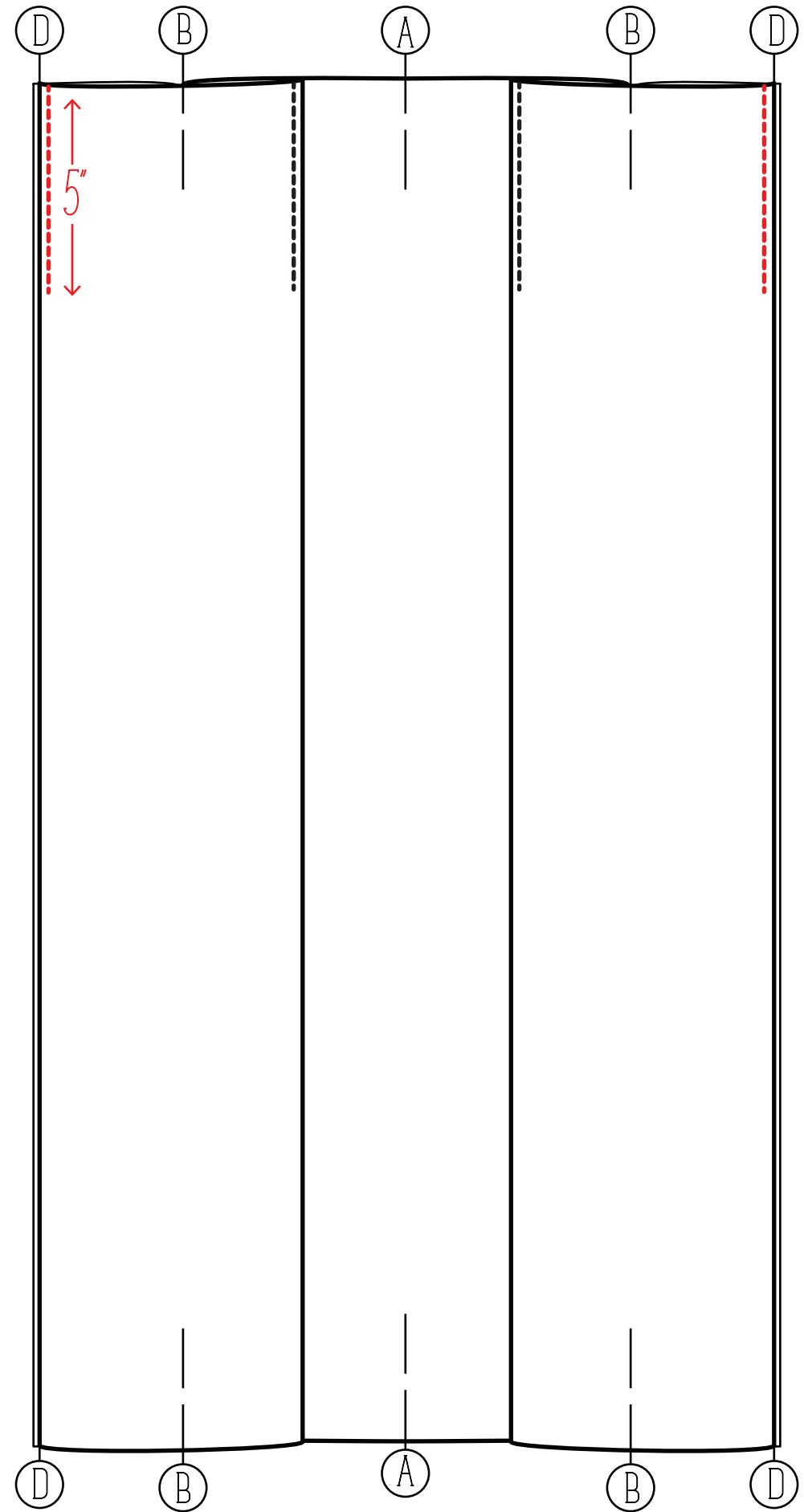
6. fold and top stitch side pleats

line up points E and B to create a fold on the outside of the fabric,
close to, but not on top of the side seams.



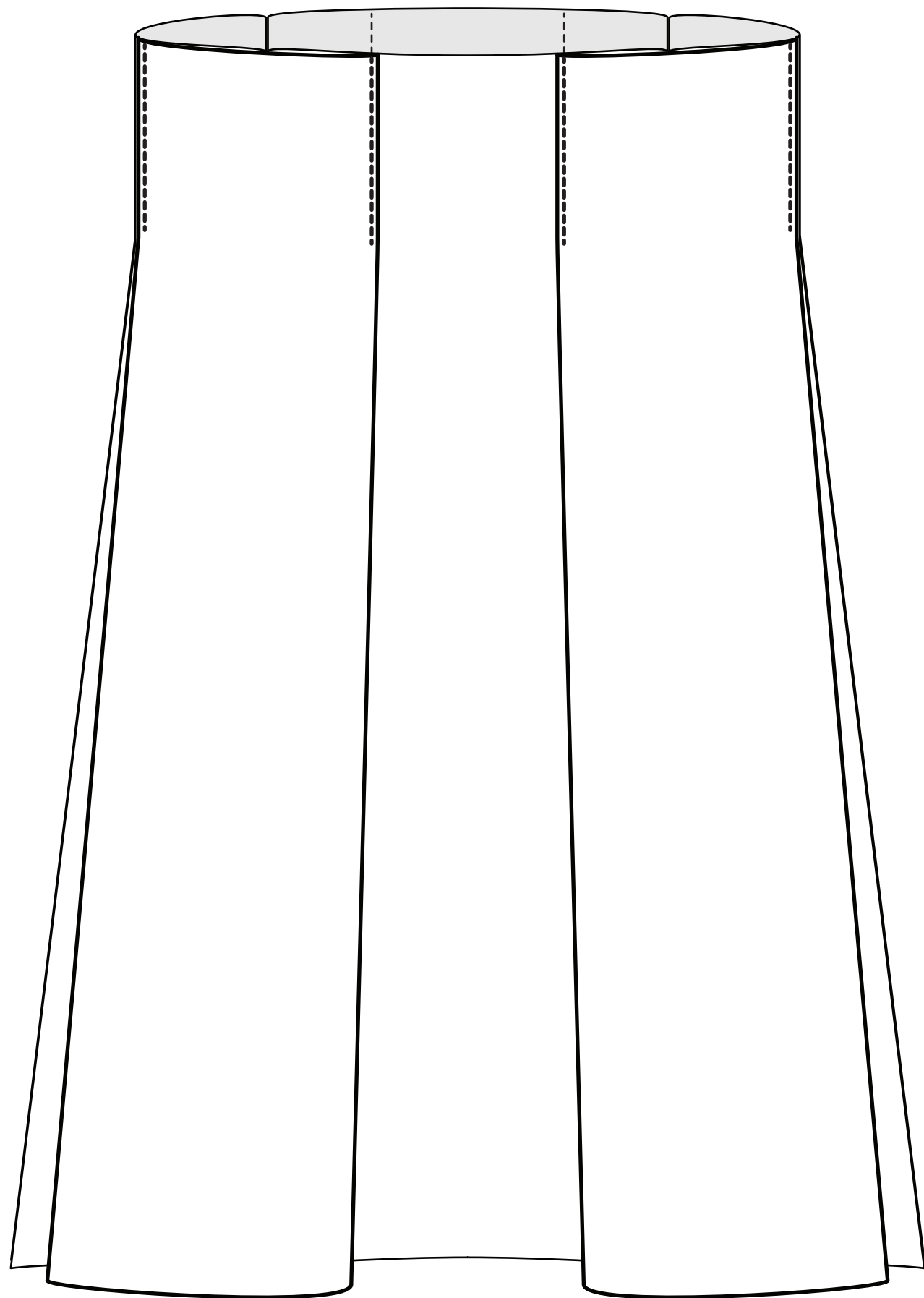
folds should face side seams

top stitch close to the fold lines 5"
down from the top edge



7. mark interior for elastic

outside



inside

